

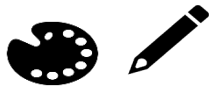
Fit for stage



When making costumes for a ballet, the **Costume Designer** draws the costumes and it is important for them to make sure that the designs don't restrict the dancer's body. As well as looking beautiful on stage, dancers need to be able to move! Ballet costumes are designed to fit the dancer's role and allow them to move freely and comfortably on stage. When the designs are finished, the **Costume Makers** find the fabric and make the costumes according to the design. The materials used to make them are usually light and stretchy, allowing dancers to do big leaps and many turns!



ACTIVITY BOX



Choose your favourite character from *Anne of Green Gables* and design a costume for them. You can create a costume for whatever period you would like your version of *Anne of Green Gables* to be set in. Here are some things to think about:

- What sort of material will allow the dancer to move freely?
- What sort of clothes were typical of your chosen period?
- How are these different to the clothes that you wear today?

When designing a costume, it is important to remember:

- Who is the costume for? Think about your character's personality.
- What colours you want to use and why?
- What sort of material you want to use and why?

Label your design with these details.